

D2862



Characteristics

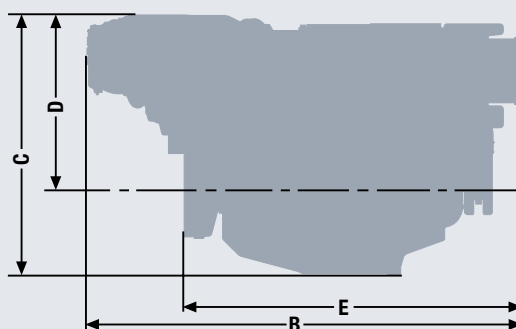
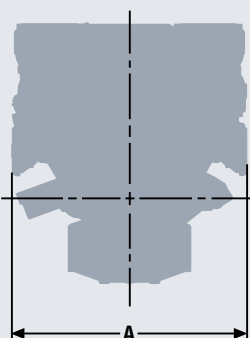
- Cylinders and arrangement: 12 cylinders in 90° V arrangement
- Operation mode: 4-stroke diesel engine, watercooled
- Turbocharging: Turbocharger with charge air intercooler and waste gate (1-stage: D2862 LE 446/426, 2-stage: D2862 LE 456/436)
- Number of valves: 4 valves per cylinder
- Fuel system: Common Rail direct fuel injection with electronic control
- Engine lubrication: Closed system with forced feeding, oil cooling and filtering
- Type of cooling: Plate heat exchanger, seawater cooled
- Engine control: Electronic injection control (EDC)
Electronic engine monitoring including diagnostic unit
- Fuel: DIN EN 590

Technical features

Type designation	LE 446	LE 426	LE 456	LE 436
Displacement l	24.24	24.24	24.24	24.24
Maximum output to DIN ISO 3046-1 kW (hp)	1,029 (1,400)	1,140 (1,550)	1,213 (1,650)	1,324 (1,800)
Rated speed rpm	2,300	2,300	2,300	2,300
Maximum torque Nm	4,680	5,180	5,510	6,010
at speed rpm	1,200–2,100	1,200–2,100	1,200–2,100	1,200–2,100
Lowest specific fuel consumption ¹⁾ g/kWh	203	203	195	200
Classifiable	✓	-	✓	-
Exhaust gas status	IMO Tier II, EPA Tier 3 ²⁾ , RCD 2013/53/EC, 97/68/EC	IMO Tier II, EPA Tier 3 ²⁾ , RCD 2013/53/EC, 97/68/EC	IMO Tier II, EPA Tier 3 ²⁾ , RCD 2013/53/EC, 97/68/EC	IMO Tier II, EPA Tier 3 ²⁾ , RCD 2013/53/EC, 97/68/EC

1) Tolerance +5% according to DIN ISO 3046-1

2) For private use only



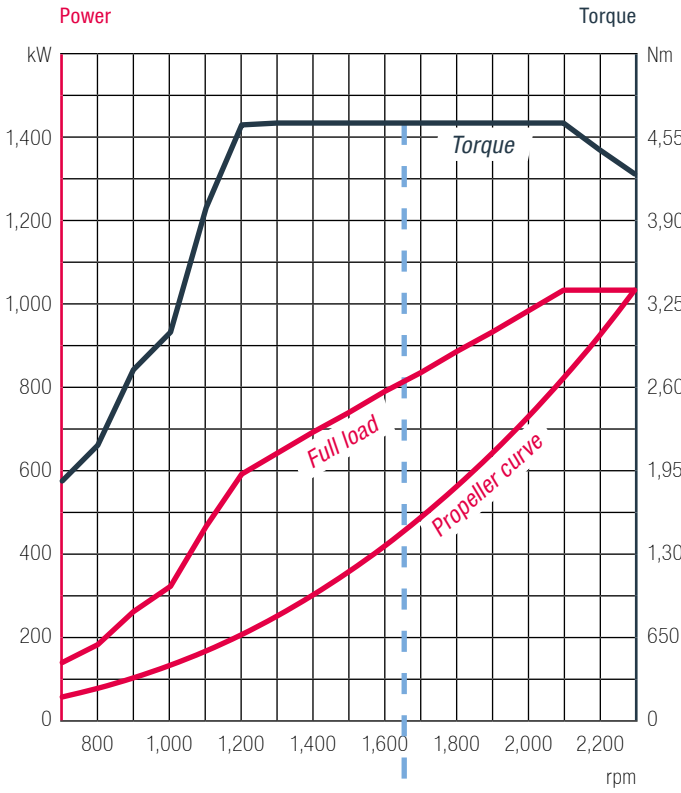
Dimensions

Type designation		LE 446/426	LE 456/436
A-Overall width	mm	1,153	1,153
B-Overall length	mm	2,130	2,139
C-Overall height	mm	1,230	1,272
D-Top of engine to crankshaft centre	mm	765	808
E-Length of engine from front end to edge of flywheel housing	mm	1,630	1,658
Average weight of engine ready for installation (dry)	kg	2,270	2,380

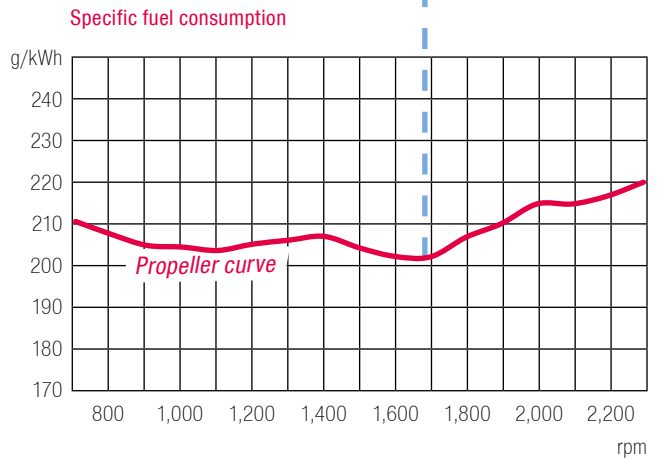
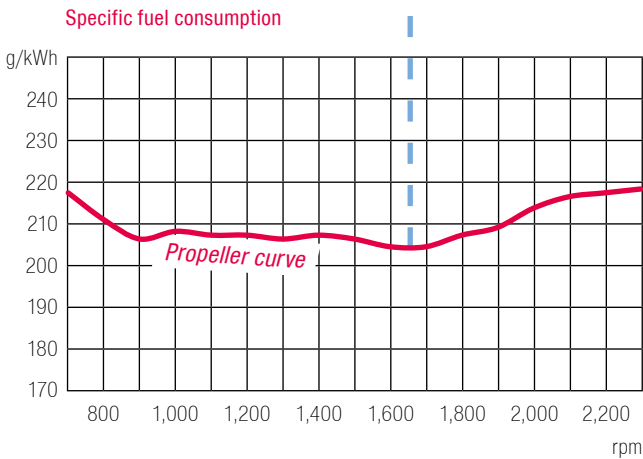
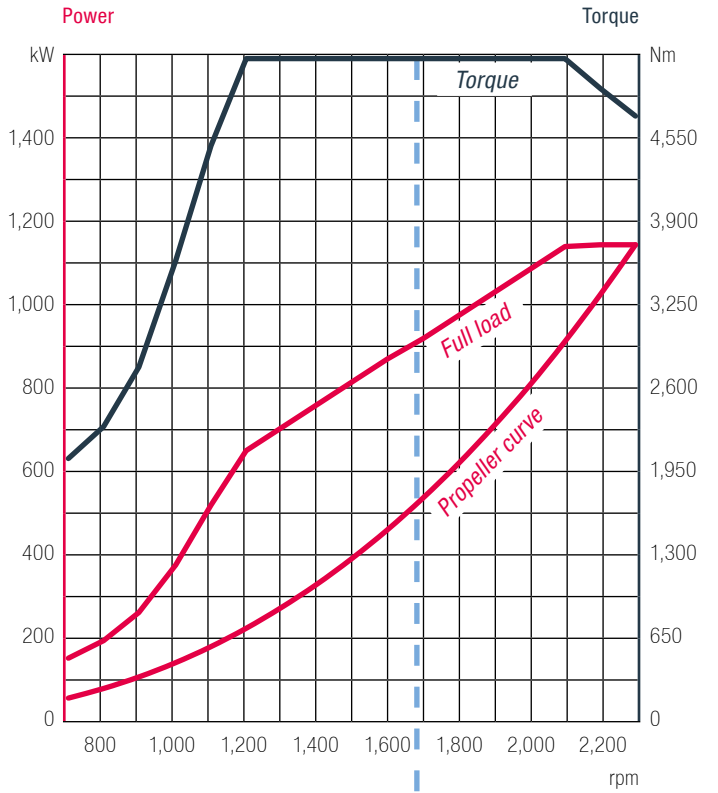
For detailed examinations of installation dimensions, please order drawings from our factory.

D2862

LE 446



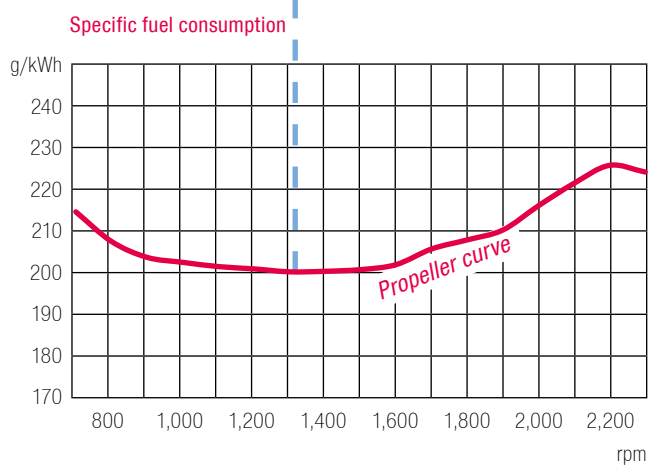
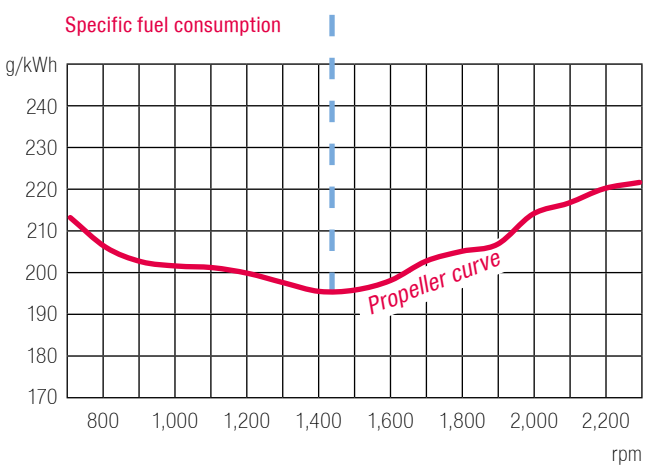
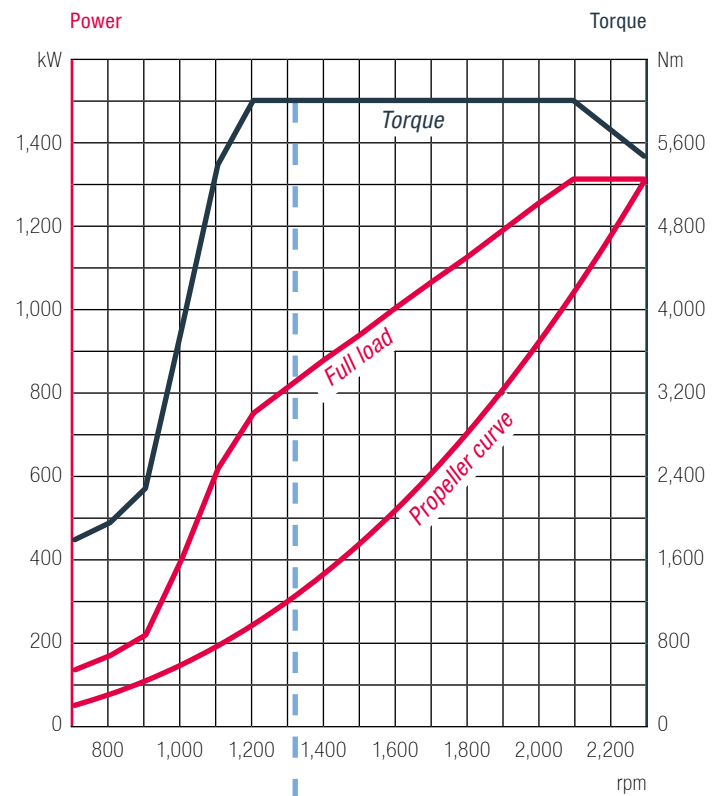
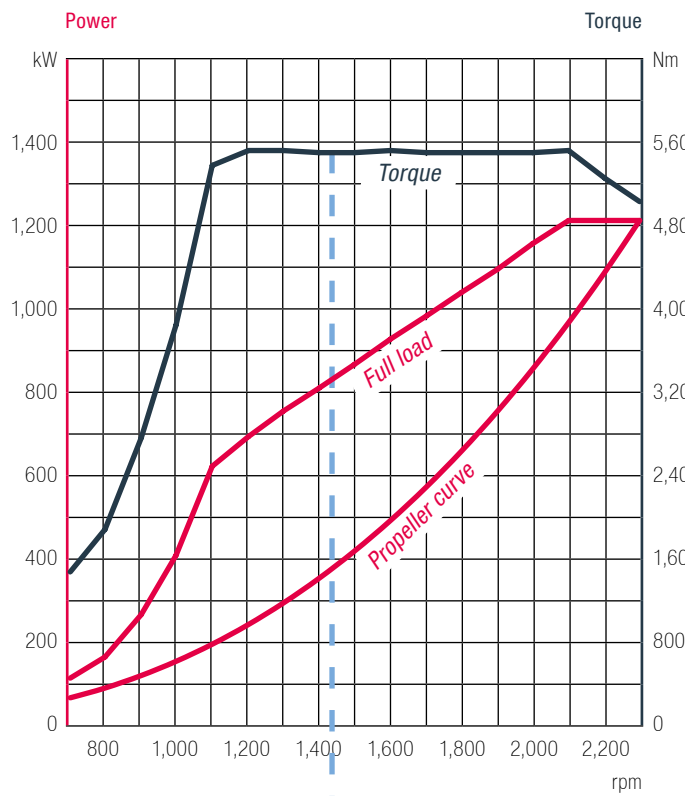
LE 426



--- Maximum torque at most fuel efficient operating point

LE 456

LE 436



--- Maximum torque at most fuel efficient operating point